

NORMAN[®]

Programming Portrait™ Motorized Honeycomb Shades

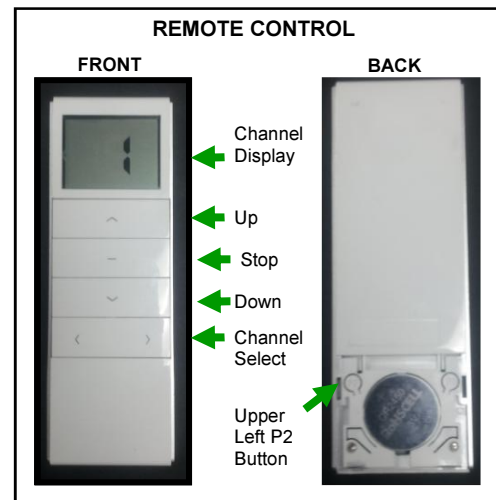
Things to know about Motorized Portrait™

1. BATTERIES ARE NOT INCLUDED!!!
2. EACH SHADE REQUIRES 8AA BATTERIES
3. THE 15 CHANNEL REMOTE REQUIRES A 3 VOLT CR2450 BATTERY. (THIS CAN BE PURCHASED ONLINE, SPECIALTY BATTERY STORES OR SELECT BIG BOX STORES).
4. ALL SHADES COME PROGRAMMED FROM THE FACTORY! PLEASE TELL US WHICH CHANNEL YOU WANT THE SHADES PROGRAMMED TO (1-15. 0 IS AN ALL CHANNEL). EACH CHANNEL WILL HANDLE UP TO 10 SHADES.

Motorized Honeycomb Programming

Step 1: PAIR REMOTE CHANNEL WITH SHADE

1. Make sure all battery packs are unplugged from the motors.
2. Start with fresh batteries for the motor battery packs. (8 AA batteries per shade) Install the batteries per the diagram.
3. Ensure the remote control is powered. (1 3V CR2450 Battery). If powered the LCD channel display will display a number 0-15 (0 is the all button. Do not program the shade to this channel!)
4. Plug in the shade you wish to program first.
5. Remove the battery cover from the remote control and you will see 4 buttons surrounding the battery. Locate the UPPER LEFT P2 BUTTON. You will not need any of the other buttons.
6. On the shade locate the manual button on the top of the shade. Hold this button until the shade jogs. This lets the motor know that it is ready to be paired with the remote.
7. On the remote select the channel you would like to pair the motor with.
8. Press the UPPER LEFT P2 BUTTON – the shade will jog
9. Press the UPPER LEFT P2 BUTTON – the shade will jog
10. Press the UP BUTTON ON THE FRONT OF THE REMOTE – the shade will jog
11. Press the DOWN BUTTON ON THE FRONT OF THE REMOTE – the shade will begin moving down. The shade is now paired to the selected channel. Stop the shade before it gets all the way to the bottom. There are no limits set on the shade now.



Step 2: SET THE UP AND DOWN LIMITS ON THE SHADE

1. Start on the paired channel.
2. Press the UPPER LEFT P2 BUTTON – the shade will jog
3. Press the UP BUTTON ON THE FRONT OF THE REMOTE – the shade will jog
4. Press the UPPER LEFT P2 BUTTON – the shade will jog
5. Press the UP BUTTON ON THE FRONT OF THE REMOTE – the shade will begin moving up to the desired up position. (If the shade is already in the up position skip this step and move to step 6).
6. Press the STOP BUTTON ON THE FRONT OF THE REMOTE – where the up limit should be
7. Press the STOP BUTTON ON THE FRONT OF THE REMOTE CONTINUOUSLY – the shade will jog once it has paired with the remote
8. Press the DOWN BUTTON ON THE FRONT OF THE REMOTE – the shade will begin moving down
9. Press the STOP BUTTON ON THE FRONT OF THE REMOTE – when the shade reaches the bottom limit
10. Press the STOP BUTTON OF THE FRONT OF THE REMOTE CONTINUOUSLY – the shade will jog once it has paired with the remote