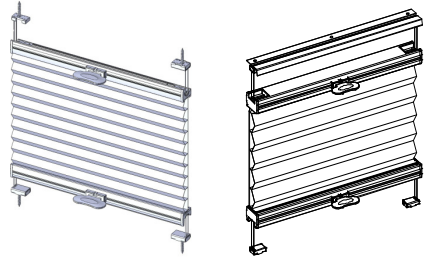


N300476  
65101-11728

## Installation Instructions

### Honeycomb Shades

#### SmartFit™



3/8" Single

3/8" Double &  
3/4" Single with Rail  
Cover

### Getting Started

Remove the shade from the package. Save the packaging until the shade is installed and working to your satisfaction.

#### Tools Needed:

- Power drill and drill bit
- Measuring tape
- Screwdriver
- Level
- Pencil



You will need to use the following fasteners for your particular mounting surface.

Surface	Fastener
Wood	M3.5×25mm Screws (Provided) M3.8×38mm
Drywall/Plaster	Wall Anchors, Expansion Bolts (Not Provided)
Metal	Sheet Metal Screws (Not Provided)

### Hardware

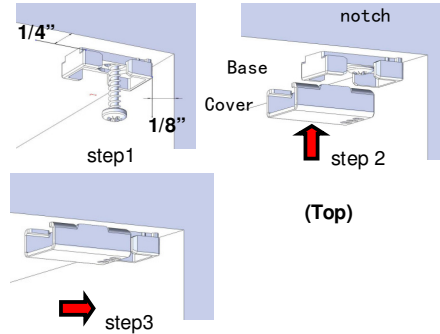
Order Width (X)	X ≤ 50"	X > 50"
Handle	2	4
Cord Equalizer Housing Base (for 3/8" Single)	4	7
Cord Equalizer Housing Base (for 3/4" Single & 3/8" Double)	2	
L Bracket (for 3/8"S, Wall Mount)	4	7
L Bracket for windows with marble sill (Optional) (for 3/8"S)	2	2
L bracket (for 3/4" Single & 3/8" Double, Wall Mount)	8.5" < X ≤ 40", 2	40" < X ≤ 52", 3

	52" < X 72", 4
M3.5×25mm Screw (for Base, 3/8" S, Inside Mount)	4
M3.5×25mm Screw (for Base, 3/4" S & 3/8" D, Inside Mount)	8.5" < X ≤ 40", 4 40" < X ≤ 52", 5 52" < X 72", 6
M3.8×38mm screw (for Wall Mount)	L bracket qty*2
M3 x 3.6mm Bolt (for locking base on L bracket, Wall Mount)	2
Spacer Block (Optional, Wall Mount)	1pc to extend distance 10mm 2pcs to extend distance 18mm

### Bracket Installation

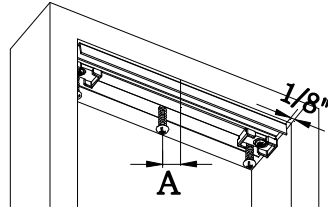
#### Inside Mount – for 3/8" Single Cell

For flush mount, the minimum distance from the top/bottom wall to the base side is 1/4" and 1/8" from the side wall to the center of the screw hole. Use M3.5×25mm Screw to secure the base. Align the cover with the notch of the base and push the cover in toward the wall.



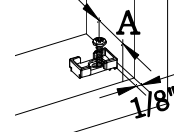
#### Inside Mount – for 3/8" Double Cell & 3/4" Single Cell

For flush mount TOP, the minimum distance from the left/right side wall to the end of rail cover is 1/8" and the distance from the center of screw hole to edge of wall is A (A=3/4" for 3/8"D & A=7/8" for 3/4"S). Use M3.5×25mm Screw to secure the rail cover. Align the cover with the notch of the base and push the cover in toward the wall.



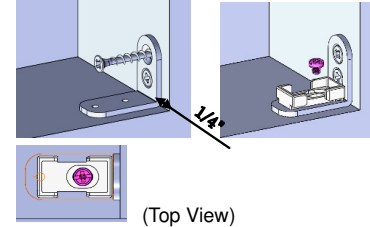
For flush mount BOTTOM, the minimum distance from the bottom wall to the base side is 1/8" and the distance from the edge of wall to the center of the screw hole is A (A=3/4" for 3/8"D & A=7/8" for 3/4"S). Use M3.5×25mm Screw to secure the base. Align

the cover with the notch of the base and push the cover in toward the wall.



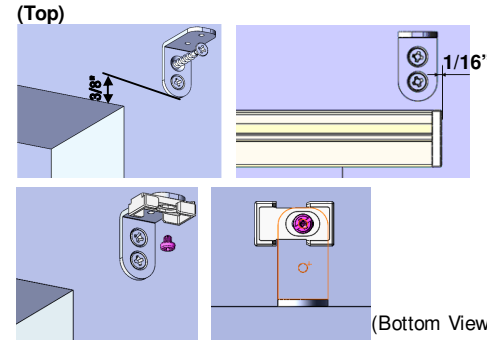
#### Side mount L bracket for windows with marble sill (optional for 3/8" Single)

Allocate a distance of 1/4" from bottom corner window frame and use two M3.8×38mm screws to secure the L bracket. Use one M3 x 3.6mm bolt to attach base to the L bracket (through inner screw hole)



#### Outside Mount – for 3/8" Single Cell

Allocate a minimum distance of 3/8" from top window opening to the L bracket and align L bracket 1/16" away from shade end. Use two M3.8×38mm screws to fasten the L bracket. Once the L bracket is installed, use one M3 x 3.6mm bolt to attach base. Finally, align the cover with the notch of the base and push the cover in, as shown in "Inside Mount" illustration.

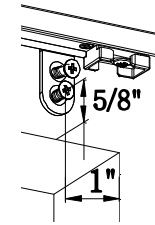


#### (Bottom)

Install the bracket similar to top steps but in reverse way.

**Outside Mount – for 3/8" Double Cell & 3/4" Single Cell**  
Allocate a minimum distance of 5/8" from the center of screw hole to the edge of the wall and align the center of screw hole 1" away from the wall as the following picture.

Use two M3.8×38mm screws to fasten the L bracket. Finally, align the cover with the notch of the base and push the cover in, as shown in "Inside Mount" illustration.

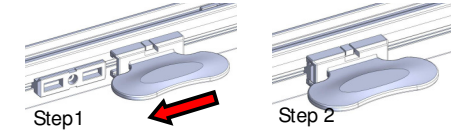


#### (Bottom)

Install the bracket similar to previous step but in reverse. Use one M3 x 3.6mm bolt to attach base.

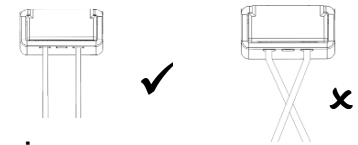
### Handle Installation

Slide the handle onto the plastic piece pre-attached to the rails.



### Notes

For child safety, please check and ensure that there are no loose cords after the shade is completely installed. Please also make sure that cords are nice and tight and not tangled.



### Cleaning

Routine cleaning will help maintain the beauty of your shade. The shade can be cleaned by using a soft brush, vacuumed with a low suction hand-held vacuum, cleaned ultrasonically (specify that a mild solution must be used and that the head rail should never be immersed in liquid), or dampen a clean cloth with a warm water and mild detergent solution to dab the spot until it's gone (do not rub!).

